

The logo for HUUVAN, featuring the brand name in a bold, black, sans-serif font. Above the letters 'U' and 'V' are small blue horizontal bars. The logo is positioned in the top left corner of the page, below a solid teal rectangular shape.

Creating Clean, Protecting Health

HV360-ACS(C50)

INDUSTRIAL VACUUMS

PARTS LISTS & DIAGRAMS



HV360-ACS (C50)

Huuvan Vacuum

Parts Diagrams & Spares Lists

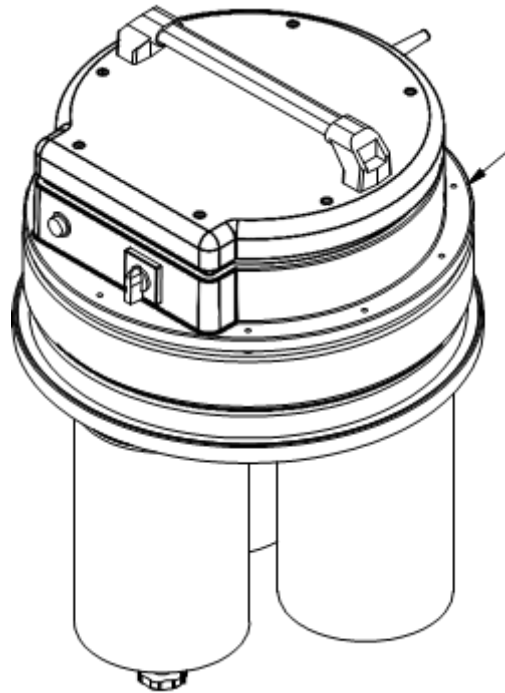


IMAGE 1

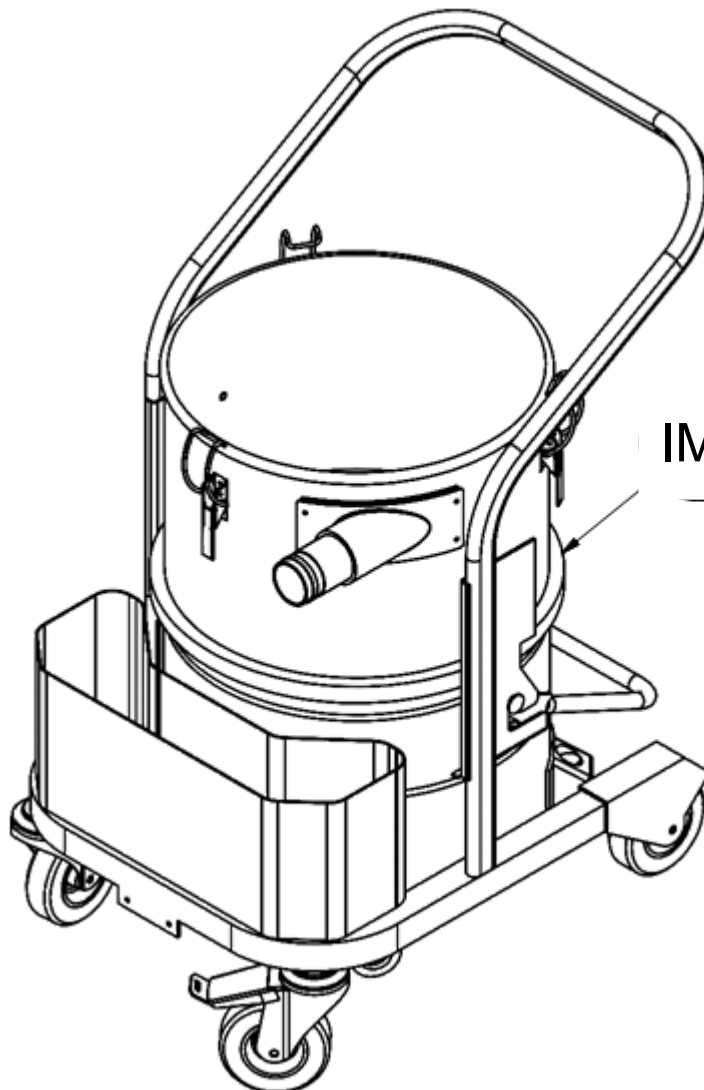
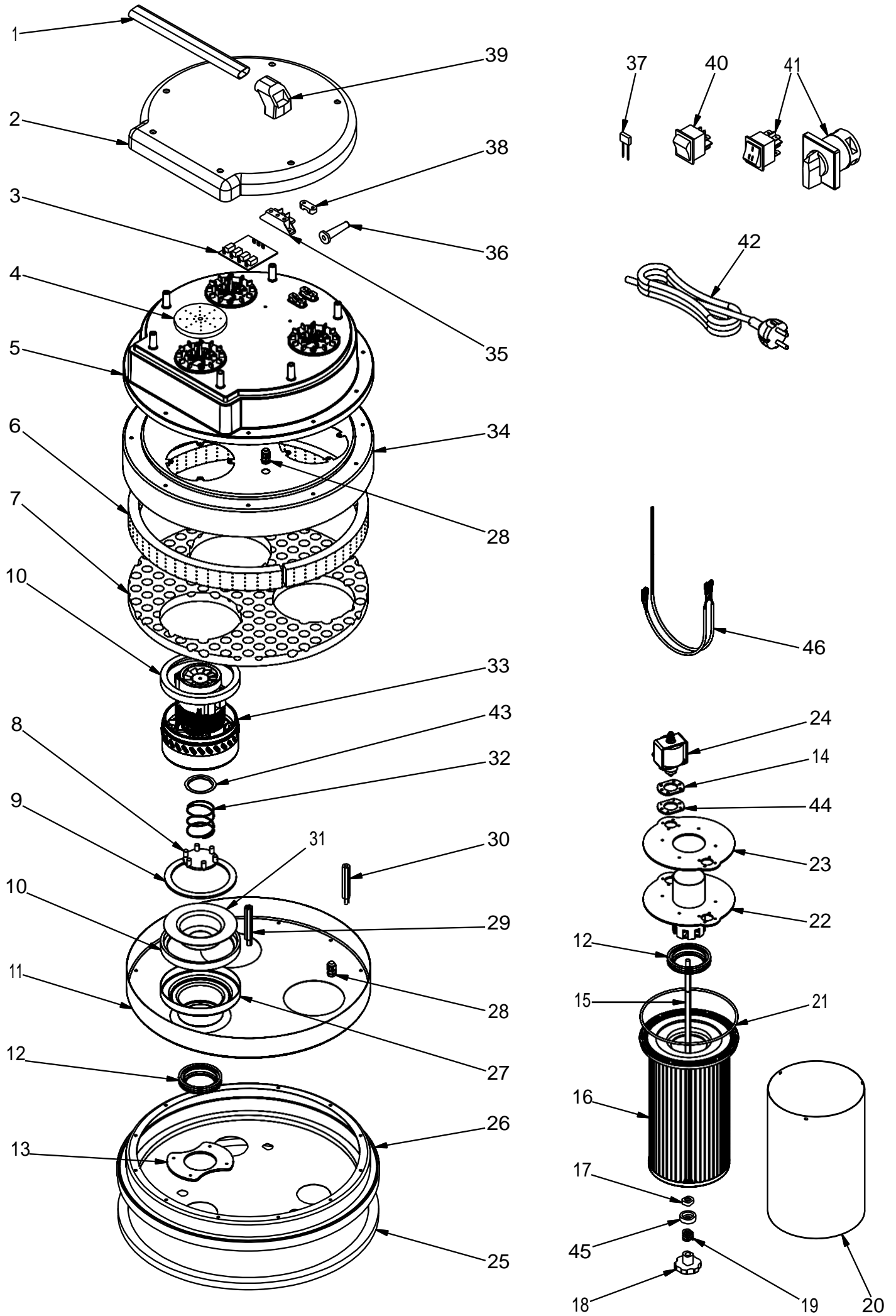


IMAGE 2

IMAGE 1

HV360-ACS (C50) Parts Diagram - Vacuum Head

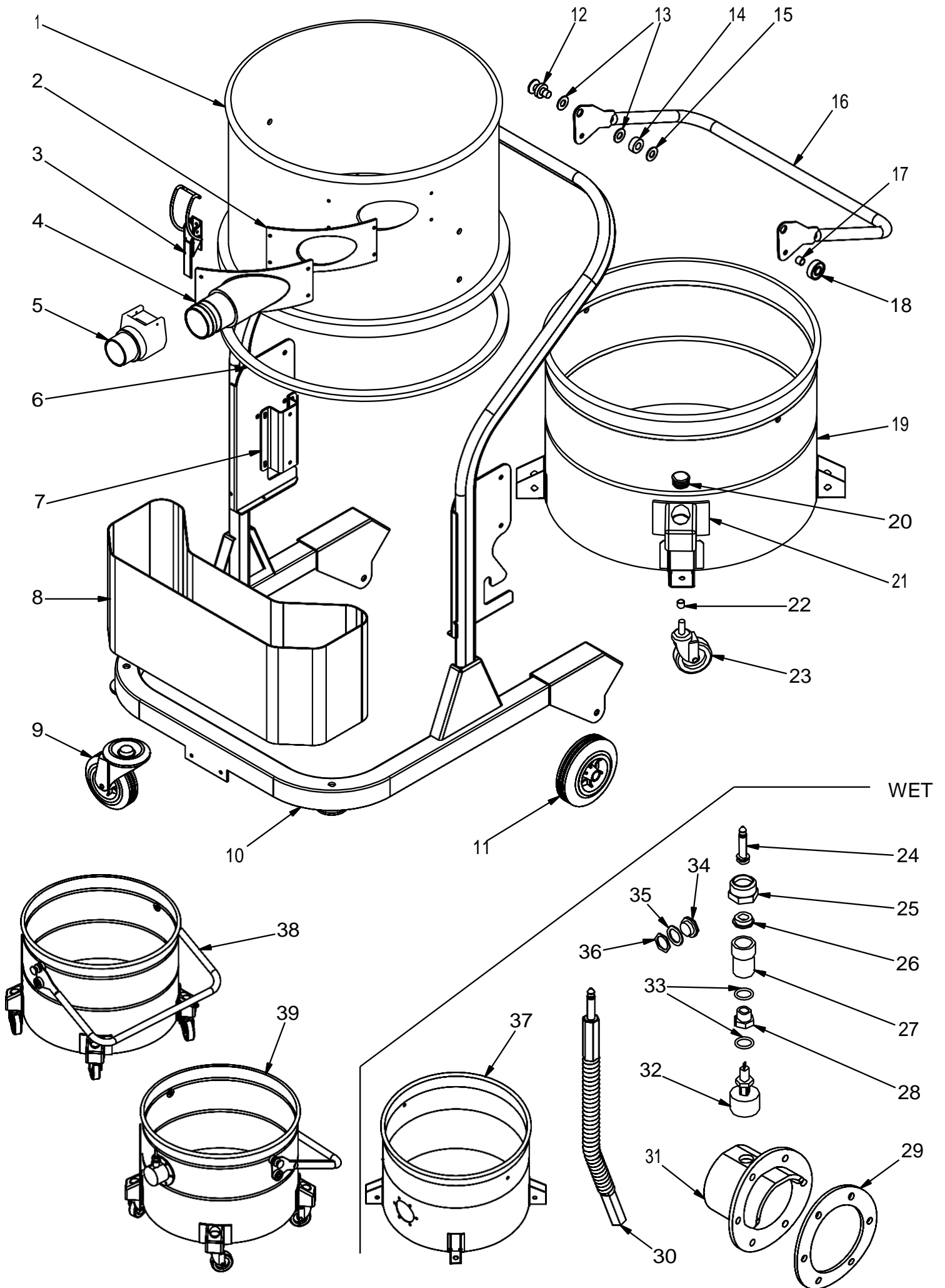


HV360-ACS (C50) Parts List - Vacuum Head

Position No.	Code	Description
1	110100	Handle
2	110200	Top Cover
3	063000	4187-1 Switchboard <i>110v Model: RP063001-110</i> <i>240v Model: RP063001-240</i>
4	010500	ø100 Foam Disk
5	120500	Motor Housing Top Cover
6	110500	50x10x12 Self-Adhesive Foam Strip
7	110600	Sound-Reducing Circle
8	022500	Motor Positioning Feet
9	012200	135x98x4 Foam O-Ring Washer
10	012100	L Gasket Seal
11	121100	Motor Positioning Door
12	013300	ø60 Grommet
13	061600	Intake Manifold Flange
14	011000	6 Hole sp.3 Washer
15	013600	Filter Support Rod H260
16	121600	ø150 Filter
17	013700	Ring Seal
18	014000	Filter Support Rod End Cap
19	013900	Filter Push Spring
20	122000	ø150 Filter Protection Guard
21	122100	ø3,5 L Filter O-Ring
22	063900	Intake Manifold
23	063800	Intake Manifold Gasket
24	010950	230V 50Hz Vibrator
25	111300	Under-Head Gasket
26	122600	Basement
27	122700	Motor Support
28	040700	Positioning Pin PG 7
29	113400	Central Spacer M8x95
30	011900	Lateral Spacer M5x85
31	022400	Valve Holder
32	061100	Valve Spring
33		1100W Bypass Motor: <i>RP113901 110v Motor</i> <i>RP113902 240v Motor</i>
34	114000	Motor Positioning Guide Top
35	012700	Terminal
36	012900	Lead L49
37	013100	Anti-Interference Capacitor
38	012800	Power Lead Holder g1U
39	013000	Handle End Cap
40	060700	Non-Stable Switch
41	060600	20A Toggle Switch
	124100	20A Rotary Switch
42	013200	3x1,58,5MT Power Lead / Cable
43	061000	Spring Disk Valve
44	011400	6 Hole Countersunk Washer Sp.3
45	013800	Ring Seal Support
46	375000	Vibrator Feed Cable

IMAGE 2

HV360-ACS (C50) Parts Diagram - Vacuum Body & Base



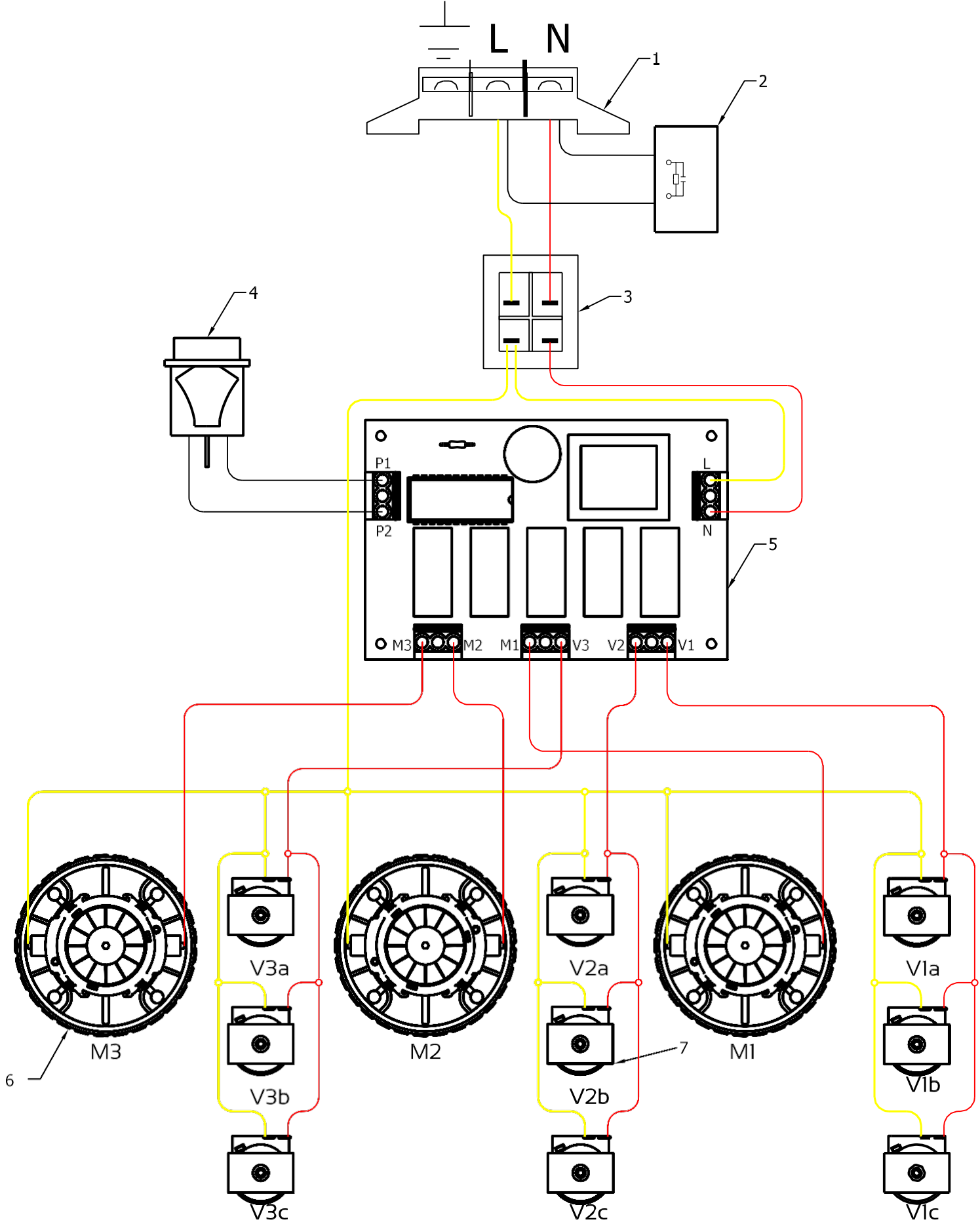
HV360-ACS (C50) Parts List - Vacuum Body & Base

Position No.	Code	Description
1	130100	H360 Filter Chamber Tank
	13010X	AISI 304 H360 Filter Chamber Tank
2	030300	Tangential Seal Pad
3	130300	Tank Clip / Hook
4	130400	Tangential Union
5	60-50 AL	Aluminum Machine Connection 60-50
	60-70 AL	Aluminum Machine Connection 60-70
6	111300	Under-Head Gasket
7	080800	Fixing Bracket for Filter Chamber
8	130800	Accessories Basket
9	081100	ø100 Swivel Wheel
10	131000	Vacuum Cleaner Metal Frame
11	081300	ø120 Heavy Duty Rear Wheel
12	081400	End Cap for Lever Handle
13	081500	25x15x1,5 Nylon Washer
14	081600	25x12x10 Compass Washer
15	081700	25x10x2 Rubber Cork Washer
16	131600	Lifting Handle for Barrel / Hopper
17	081900	12x8,5x10 Brass Compass Washer
18	082000	6201RS Bearing
19	131900	H360 Waste Tank
	13190X	AISI 304 H360 Waste Tank
20	030800	ø30 Plug
21	030700	Wheel Cover
22	030600	15x7 Compass Washer
23	030500	ø60 Heavy Duty Drum Wheels

WET

24	051900	Jack Plug
25	052000	20x1 E2310007 Ferrule Nut
26	052100	Fixing Jack Washer
27	052200	20x1 - PG7 Threaded Sleeve
28	052500	Reduced Sleeve PG 7x8 MA
29	052600	Container Seal Ring
30	051800	Full Spiral Cable Jack
31	052700	Electric Floating Container
32	052400	Electric Float NC
33	052300	Ø8 O-Ring
34	053000	Level Indicator
35	051500	Gasket Seal 1"
36	051200	1" Ferrule
37	133700	wet H360 Waste Tank
	13370X	AISI 304 wet H360 Waste Tank
38	133800CM	H360 Complete Waste Tank
	13380XCM	AISI 304 H360 Complete Waste Tank
39	133900CM	WET H360 Complete Waste Tank
	13390XCM	WET AISI 304 H360 Complete Waste Tank

HV360-ACS (C50) Parts Guide – Wiring Diagram W7



Parts List			
1	Terminal Contactor	5	Switchboard
2	Interference Breaker	6	Electric Motor
3	Toggle Switch	7	Vibrator
4	Switch		



We supply a full range of cleaning equipment for rental or purchase.

For more information, or a cleaning solution to suit your business, please get in touch –

For a more comprehensive product range, please visit our website.

Distributed by:



Address

Crescent Industrial Ltd
Berrington House,
Berrington Road,
Leamington Spa
CV31 1NB

Contact

t: 0845 33 77 695
f: 0845 33 78 695
e: info@c-ind.co.uk

www.crescentindustrial.co.uk/huuvan/