

HUUVAN

Creating Clean, Protecting Health

HV200-ACS(C35/Z2-22)

INDUSTRIAL VACUUMS

PARTS

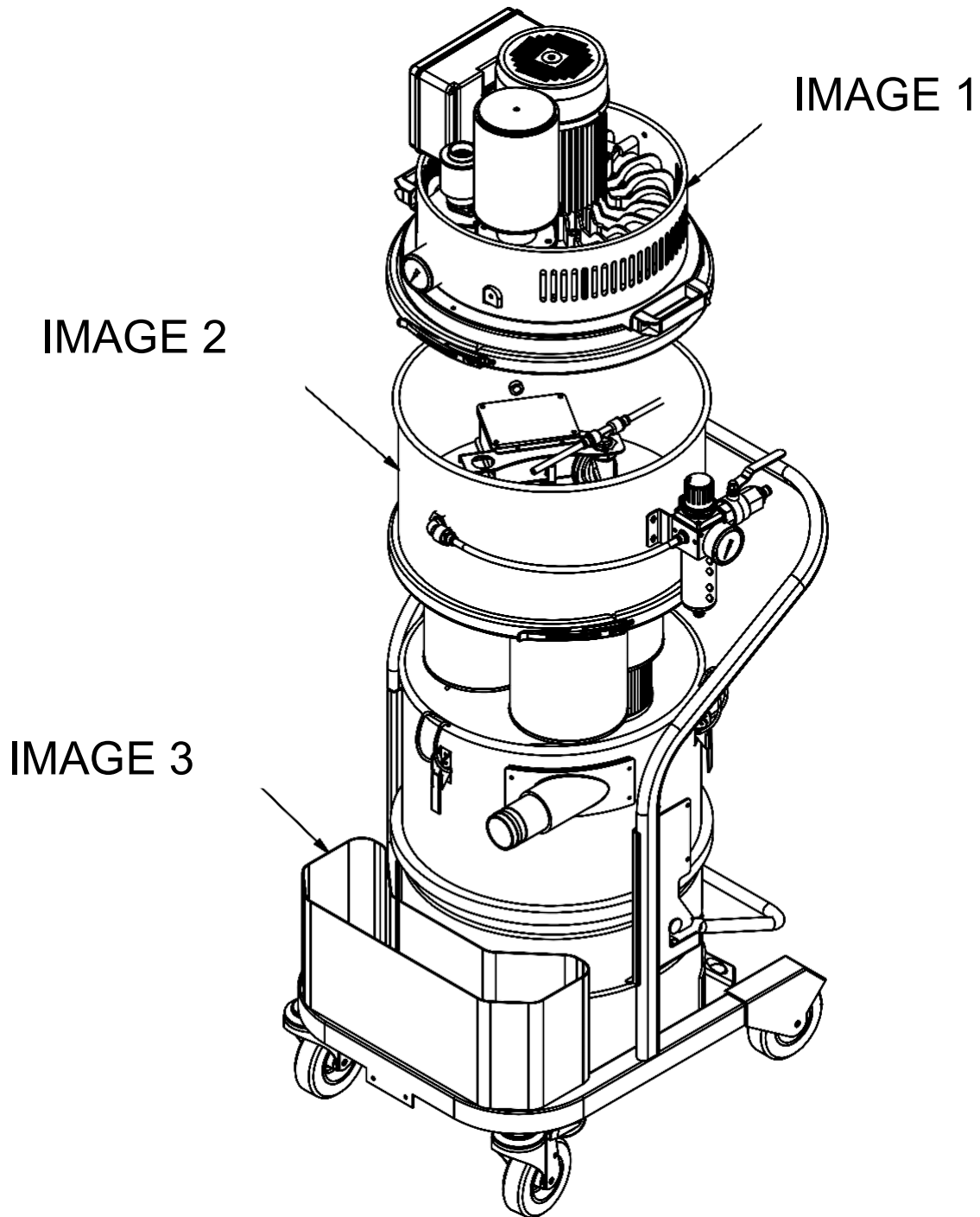
LISTS &

DIAGRAMS



HV200-ACS (C35/Z2-22) Huuvan Vacuum

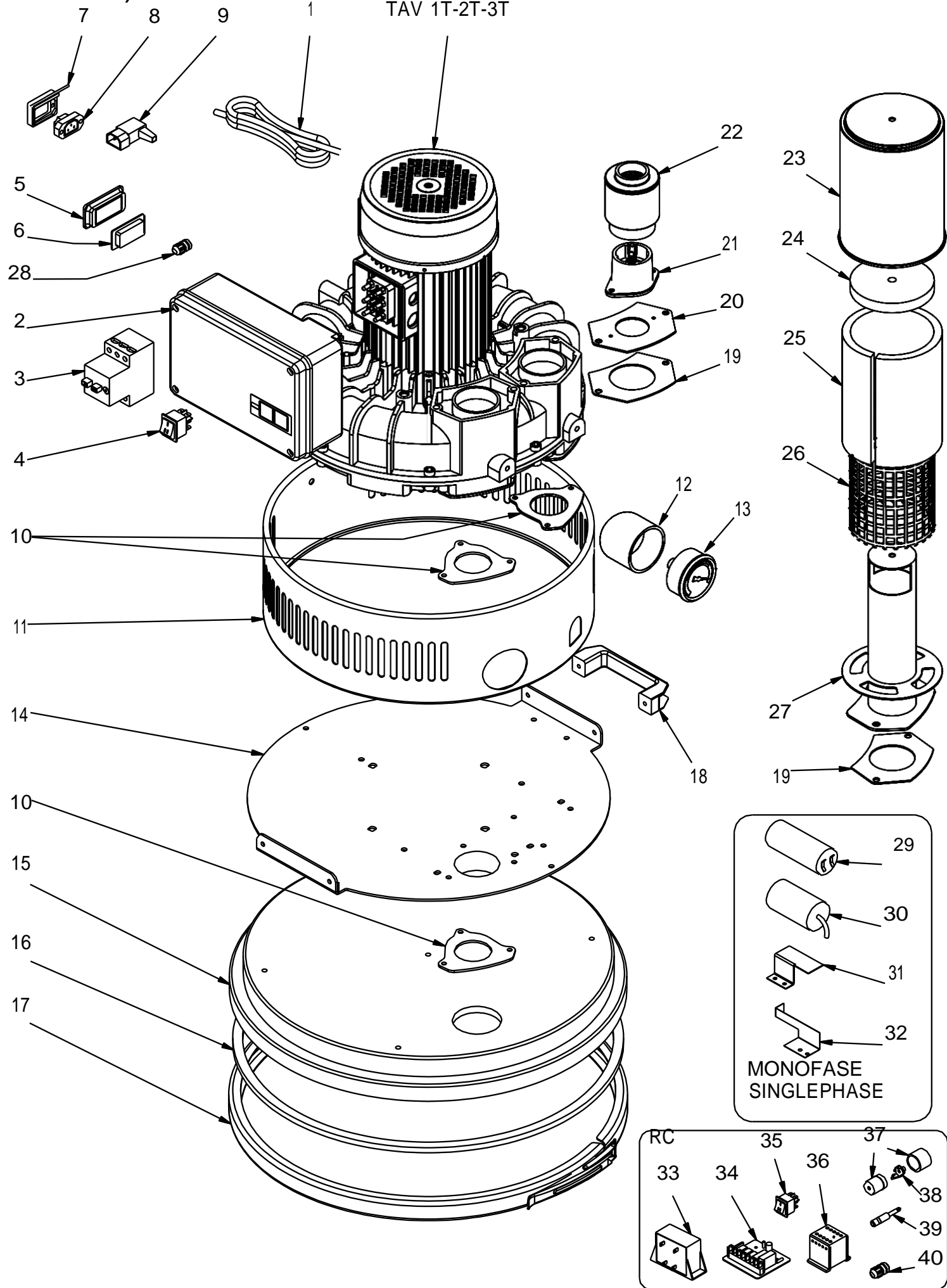
Full Parts Diagrams & Lists



(IMAGE 1)

HV200-ACS (C35/Z2-22) Parts Diagram - Vacuum Head

TAV 1T-2T-3T



29
30
31
32
MONOPHASE
SINGLEPHASE

RC
33
34
35
36
37
38
39
40

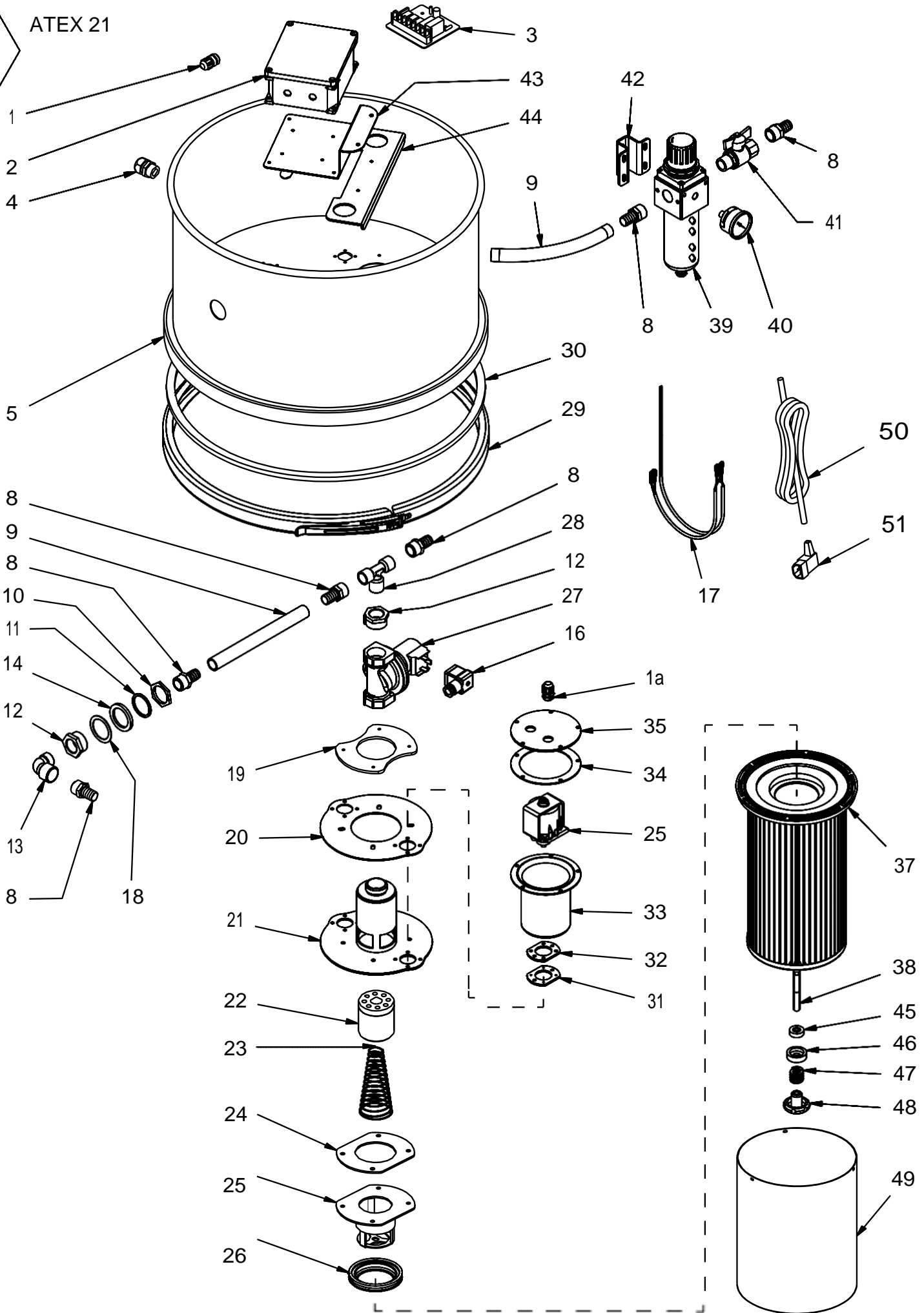
Position Number	Code	Description
1	152304	Three-Phase Power Cable 4x1 .5
	074003	Power Cable 3 x 2 .5 Phase Turbine
2	360200	Accessory Socket
	3602EX	Box Switches ATEX
3	1T0000	MCB
4	161300	16 Amp Switch
5	0744EX	Atex Protection Switchgear
6	0745EX	Sheath & Atex Protection Frame
7	360700	Socket Protection
8	360800	Grip
9	360900	Thorn
10	2T37-440	Seal for Front Cover 440
11	361114	Single Stage Heat Protection H140
12	070200	Rubber Pipe Ø 60 Vacuum Gauge
13	070300	Gauge
14	361400	Motor Housing Platform
15	361500	Lid
	3615EX	Lid AISI 304
16	111300	Under Head Gasket
17	140100	Ring Lever ø500
18	151700	Handle 6333550
19	2T10-409	Gasket
20	2T34-438	Perforated Plates for Pressure Relief Valve 438
21	2T413ACM	Limit Suction Valve
22	2T31-410	Valve Silencer 410
23	073500	Silencer Housing
24	073600	Disk Silencer Foam Ø105 sp.15
25	073700	Acoustic Silencer 370X170X15
26	073800	NET Silencer 320x175
27	073900	Flanged Pipe Silencer
28	380400	Gland ATEX PG13
29	2T4060	Motor Single-Phase 60pf Capacitor
30	2T4140	Electronic Relay
31	2T4200	Electric Circuit Breaker Mounting Bracket
32	2T4300	Fixing Bracket for 60pf Capacitor
33	393100	Transformer 400-230
34	393000	4099-2 Remote Control Electronic Board
35	010600	Switch I-0-II
36	074600	Contacto Coil 230V
37	044900	Jack Box
38	044700	Jack Socket
39	363900	Connector Jack M
40	380400	Cable Gland/Protector - ATEX PG13

(IMAGE 2)

HV200-ACS (C35/Z2-22) Parts Diagram - Vacuum Body



ATEX 21

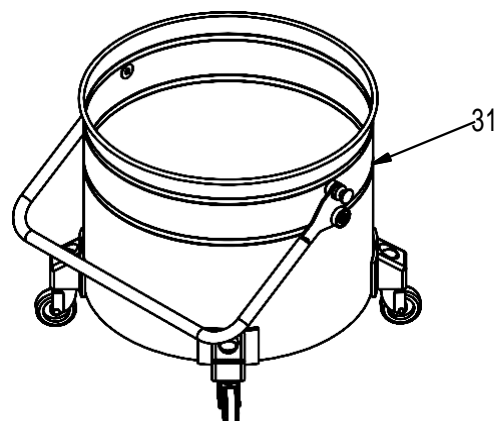
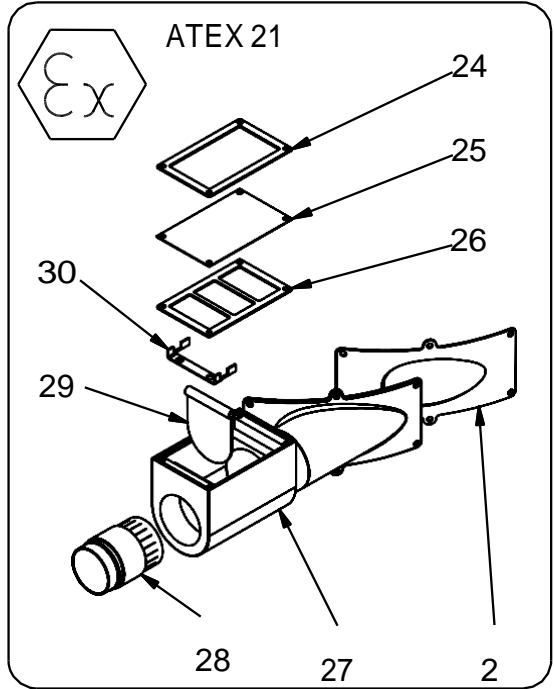
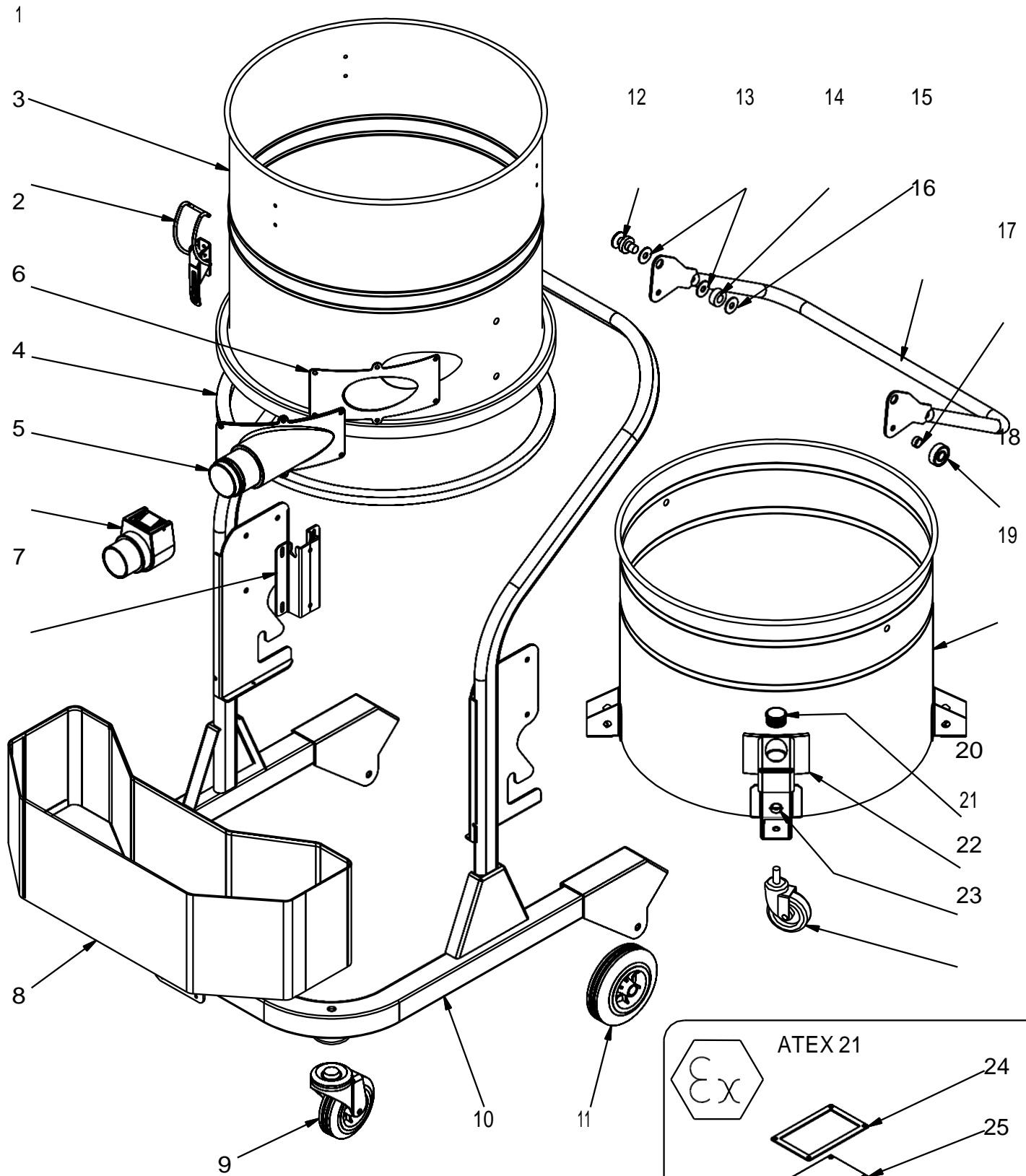


HV200-ACS (C35/Z2-22) Parts List - Vacuum Body

Position Number	Code	Description
1	373700	Cable Protector/Gland
2	380200	ATEX Electronic Card Box
3		Electronic Board 4182-1 <i>RP063001-110 110v Control Board</i> <i>RP063001-240 240v Control Board</i>
4	380400	Gland ATEX PG13
5	373300	Container
	37330X	Container AISI 304
8	522200	Hose 1/2" M ø16
9	522000	Conductive Rubber Tube
	691600	Rubber Tube Ø16
10	051200	Ferrule 1"
11	051500	Gasket 1"
12	381200	Junction Joining Nut 1"M - 1/2"F E2151010
13	381300	Elbow F-M 1/2" E2110004
14	051400	Seal Container 1"
16	381600	Atex Solenoid Valve Connector
17	375000	Vibrator Feeding Cable
18	051300	Washer 1"
19	061600	Intake Manifold Flange
20	063800	Intake Manifold Gasket
21	372801	Intake Manifold
22	371800	Piston Closing Suction
23	371901	Conical Spring Piston
24	372100	Cork Seal Rubber Bottom Manifold
25	372200	Lower Intake Manifold
26	013300	Grommet ø60
27	371500	Solenoid Valve
28	693700	Junction T 1/2F 1/2MT.F.M.F
29	140100	Lever Ring ø500
30	111300	Under-Head Gasket
31	011400	Washer 6 Holes Countersunk sp.3
32	011000	Washer 6 Holes sp.3
33	383300	Vibrator Container
34	383400	Rubber Cork Seal 110x75x3
35	383500	Vibrator Container Lid
37	121600	ø150 Filter
38	013600	Filter Support Rod / Guide H260
39	383900	Pressure Regulator
40	384000	Pressure Gauge
41	384100	Ball Valve M-F 1/2"
42	384200	Pressure Gauge Fixing Bracket
43	384300	Atex Box Fixing Plate
44	384401	Support Bracket Card Holder 3 Holes
45	013700	Ring Seal
46	013800	Support Ring Seal
47	013900	Throttle Spring
48	014000	Flyer Blocks Filter
49	122000	Filter Protection ø150
50	3850EX	Silicone Cable
	074003	3x2.5 Single-Phase Turbine Power Cable
51	360900	Plug

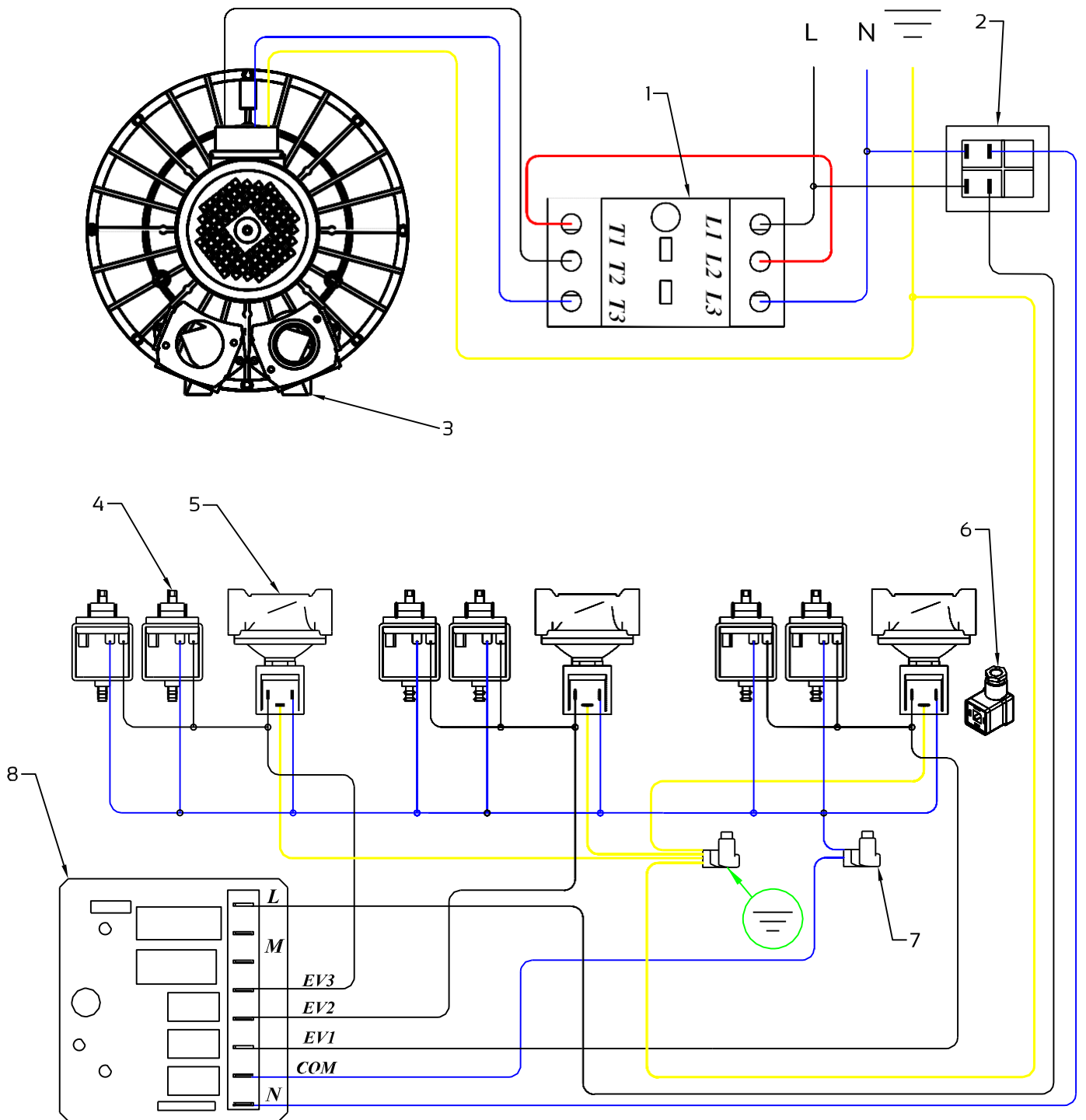
(IMAGE 3)

HV200-ACS (C35/Z2-22) Parts Diagram – Vacuum Base



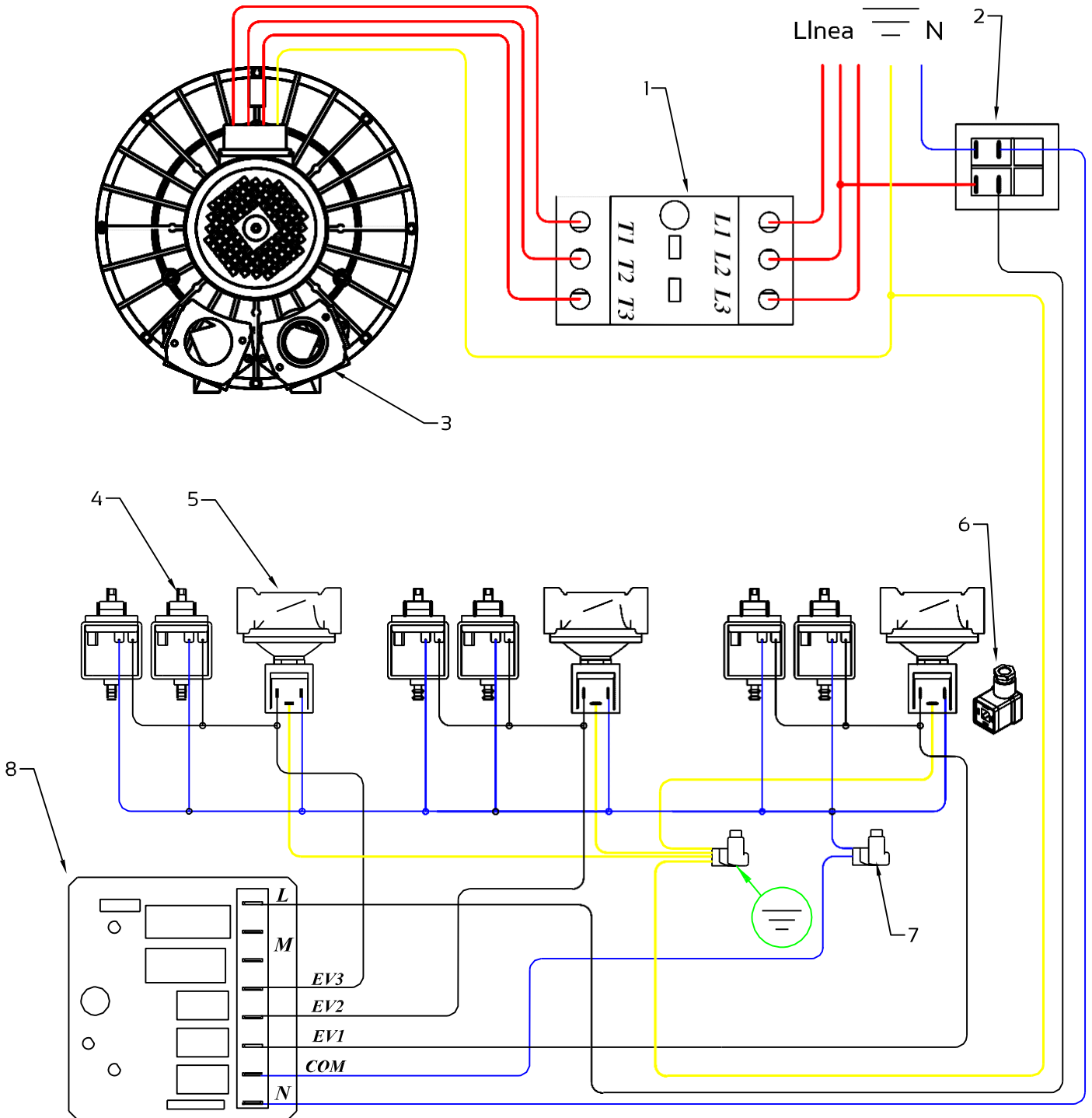
Position Number	Code	Description
1	230100	h410 Maxi Filter Chamber
	23010X	h410 Maxi AISI 304 Filter Chamber
2	030300	Tangential Seal
3	130300	Hooks / Tank Clips
4	130400	Hose Connecting Neck
5	60-50 AL	60-50 Aluminum Machine Connection
	60-70 AL	60-70 Aluminum Machine Connection
6	111300	Under-Head Gasket
7	080800	Filtering Chamber Fixing Bracket
8	130800	Tools Basket
9	081100	ø100 Pivoting Wheels
10	131000	Frame
11	081300	ø120 Wheel
12	081400	Coupling / Pin
13	081500	Nylon Washer 25x15x1,5
14	081600	Washer 25x12x10
15	081700	Rubber Cork Washer 25x10x2
16	131600	Lifting Barrel Handle & Hopper
17	081900	Brass O-Ring 12x8,5x10
18	082000	Bearing 6201RS
19	131900	Stem H360
	13190X	Stem AISI 304 H360
20	030800	Plug ø30
21	030700	Wheel Covers
22	030600	Compass 15x7
23	030500	Drum Wheels ø60
24	232400	Upper Membrane Frame
25	232500	Rubber Membrane
26	232600	Lower Membrane Frame
27	232700	Flap Union
28	23280X	Stainless Steel Union Sleeve
29	232900	Flap
30	233000	Flap Support
31	133800CM	H360 Stem Complete
	13380XCM	Complete AISI 304 H360 Frame

HV200-ACS (C35/Z2-22) Parts Guide – Wiring Diagram W19
 Electric Single-Phase Atex Components & Motor Circuit



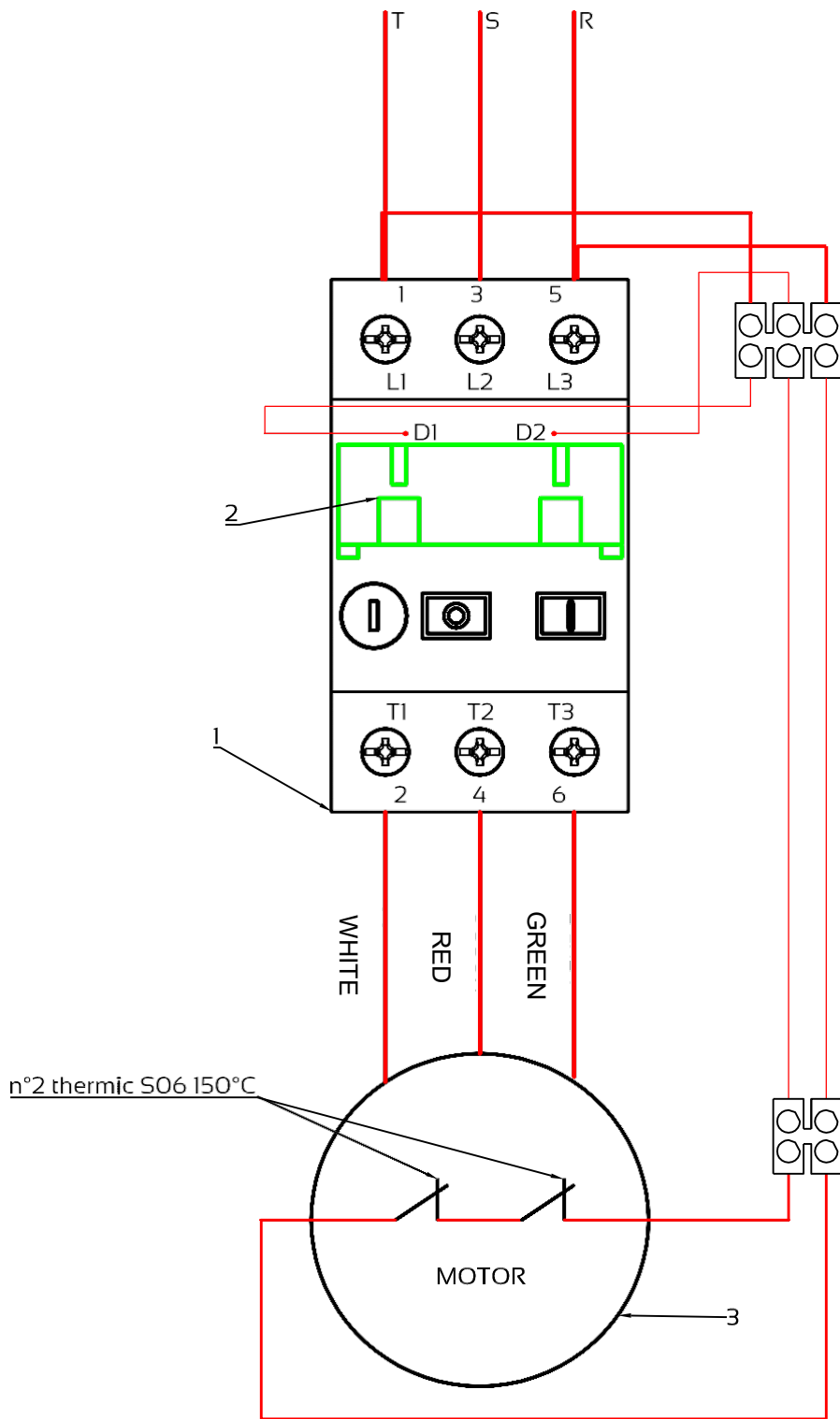
Parts List			
1	Circuit Breaker	5	Atex Solenoid Valve
2	Switch	6	Solenoid Valve Connector
3	Turbine	7	Steering Clamp
4	Vibrator	8	Control Board

HV200-ACS (C35/Z2-22) Parts Guide – Wiring Diagram W18
 Electric Triple-Phase Atex Components & Motor Circuit



Parts List			
1	Terminal	6	Switch
2	Anti-Disorder	7	Cam Switch
3	Vibrator	8	Motor
4	Plug	9	Control Board
5	Red Light		

HV200-ACS (C35/Z2-22) Parts Guide – Wiring Diagram W31 Switch Protection Circuit



Parts List	
1	Terminal
2	Anti-Disorder
3	Vibrator



We supply a full range of cleaning equipment for rental or purchase.

For more information, or a cleaning solution to suit your business, please get in touch –

For a more comprehensive product range, please visit our website.

Distributed by:



Address

Crescent Industrial Ltd
Berrington House,
Berrington Road,
Leamington Spa
CV31 1NB

Contact

t: 0845 33 77 695
f: 0845 33 78 695
e: info@c-ind.co.uk

www.crescentindustrial.co.uk/huuvan/