

TOPFLOOR

SIMPLE, STRONG, SAFE

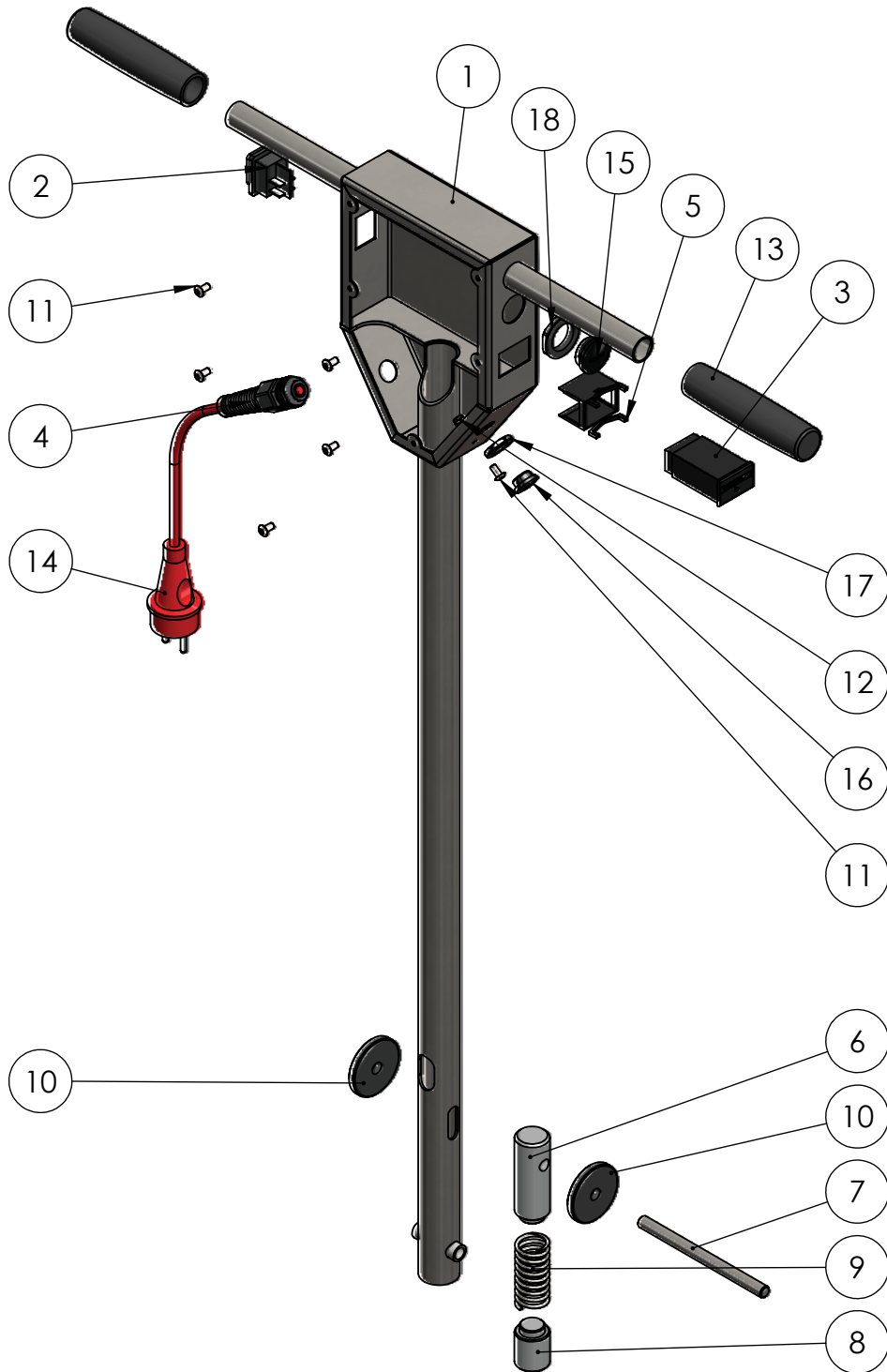
EX55-OCS

Parts Diagrams and Lists

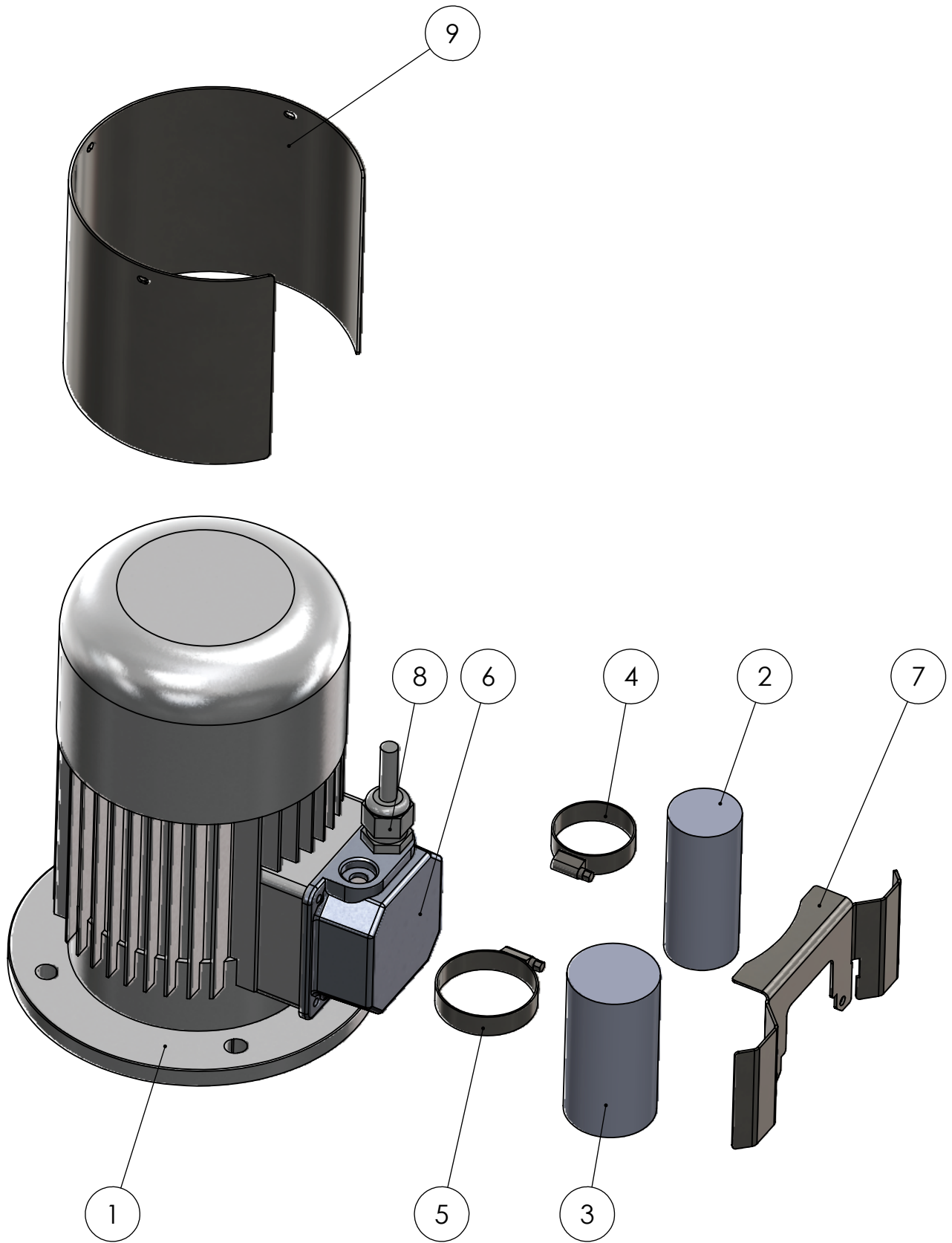


English

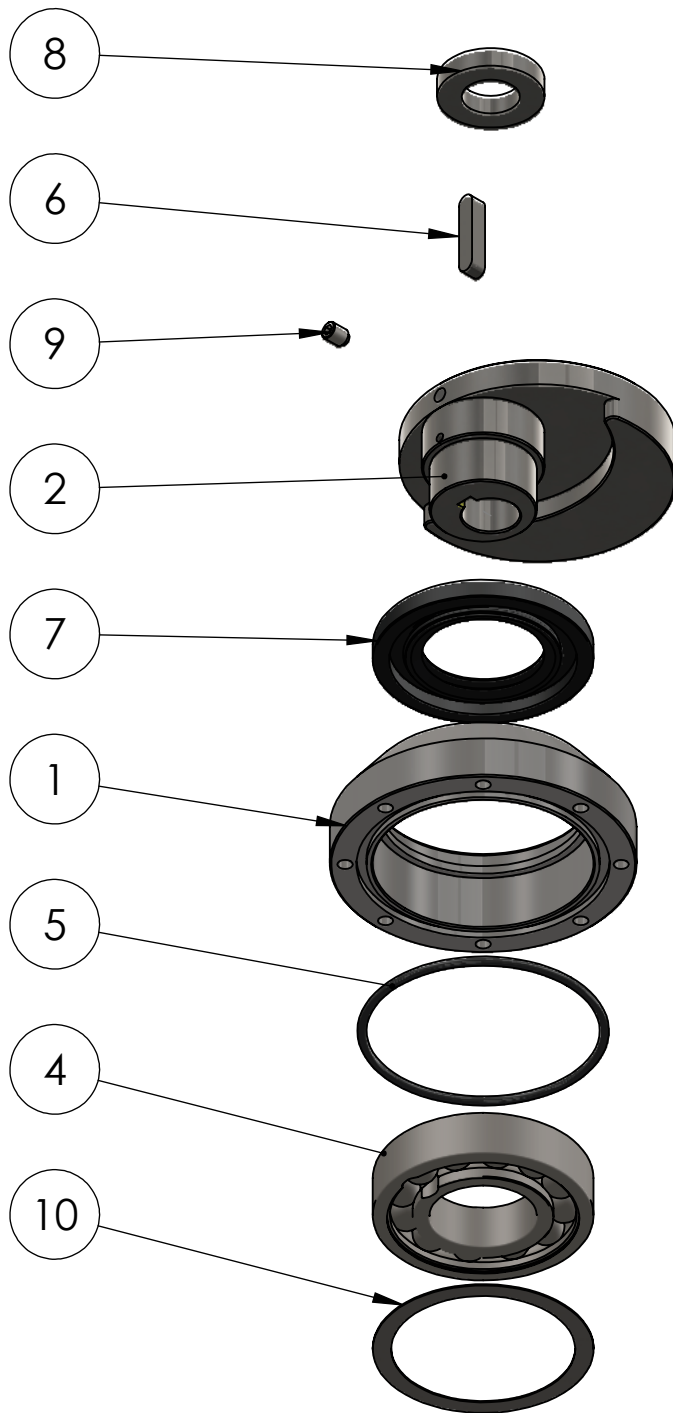
www.crescentindustrial.co.uk



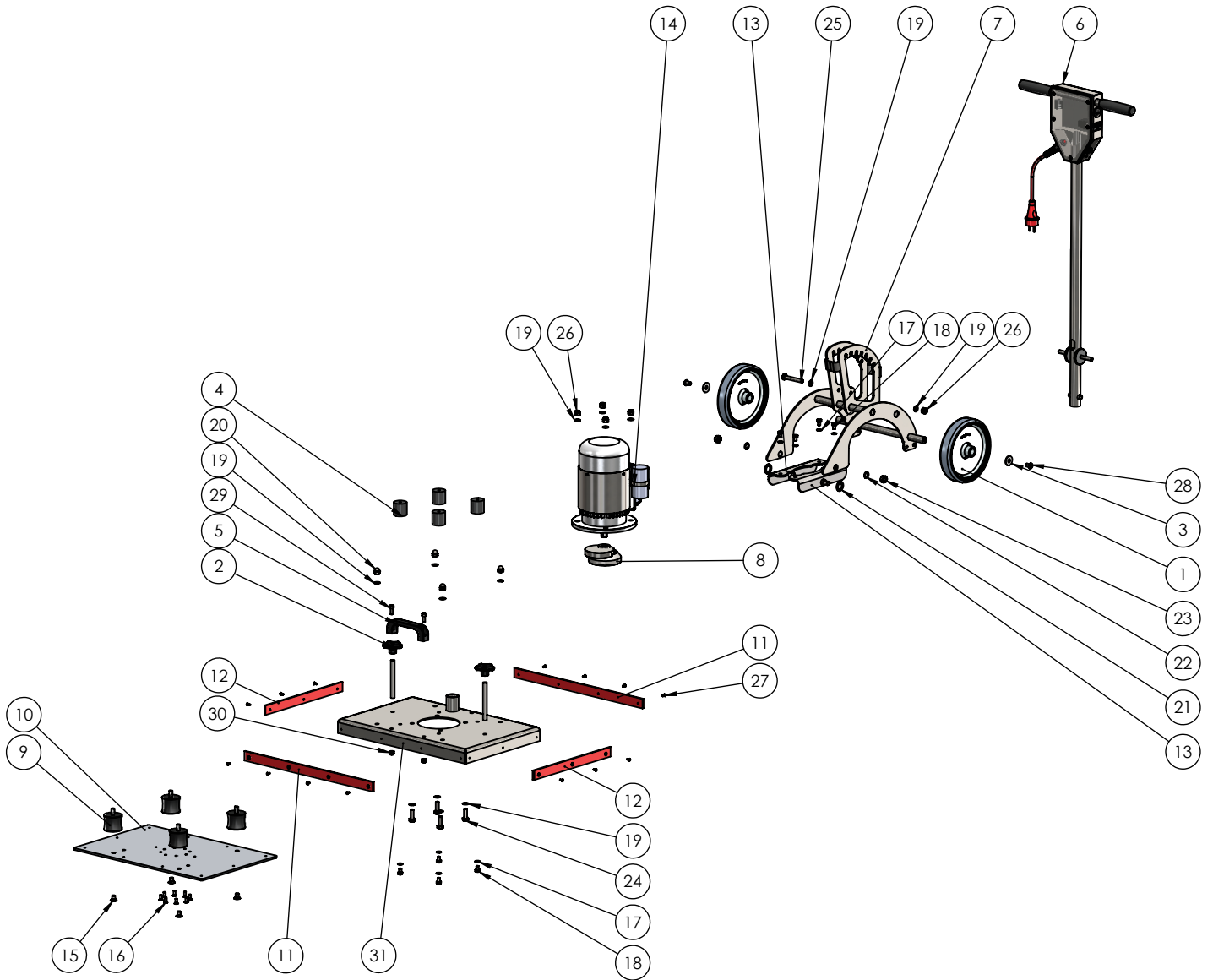
ITEM No.	PART Ref No.	DESCRIPTION	TOPFLOOR PART No.	MATERIAL	QTY
1	Control Box with Tree	T Bar Frame with Box		ASS	1
2	On/Off Switch	Switch	700107	ART	1
3	Counter	Hour / Time Counter	900005	ART	1
4	Flange	M16x1,5 Wire/Cable Protector Package	608006	NYLON	1
5	Clamp	Hour Counter Clamp		ART	1
6	Plug for Spring	Adjustable Push Plug	607002	HMPE	1
7	Axel	Axis Height Adjustment	707012	RVS 303	1
8	Plug for Spring	Spring Holder	607003	HMPE	1
9	Adjustment Spring	Spring	801001	RVS	1
10	Ring	Spacer Ring Washer	607001	HMPE	2
11	ISO 7380 - M5x10	M5x10 Imbus Ball Hd Screw	800020	A2	6
12	DIN 985 M5	M5 Nut	800036	A2	1
13	0179-pol	Ø22 Handle Grip	608004	ART	2
14	Plug & Cord	Connecting Power Cord	530031	ART	1
15	0360-pol	M25x1,5 Plug Screw		KNSTST	1
16	0361-pol	M16x1,5 Plug Screw		KNSTST	1
17	Whole Flange	M16x1,5 Packing Nut		KNSTST	1
18	0362-pol	M25x1,5 Packing Nut		KNSTST	1



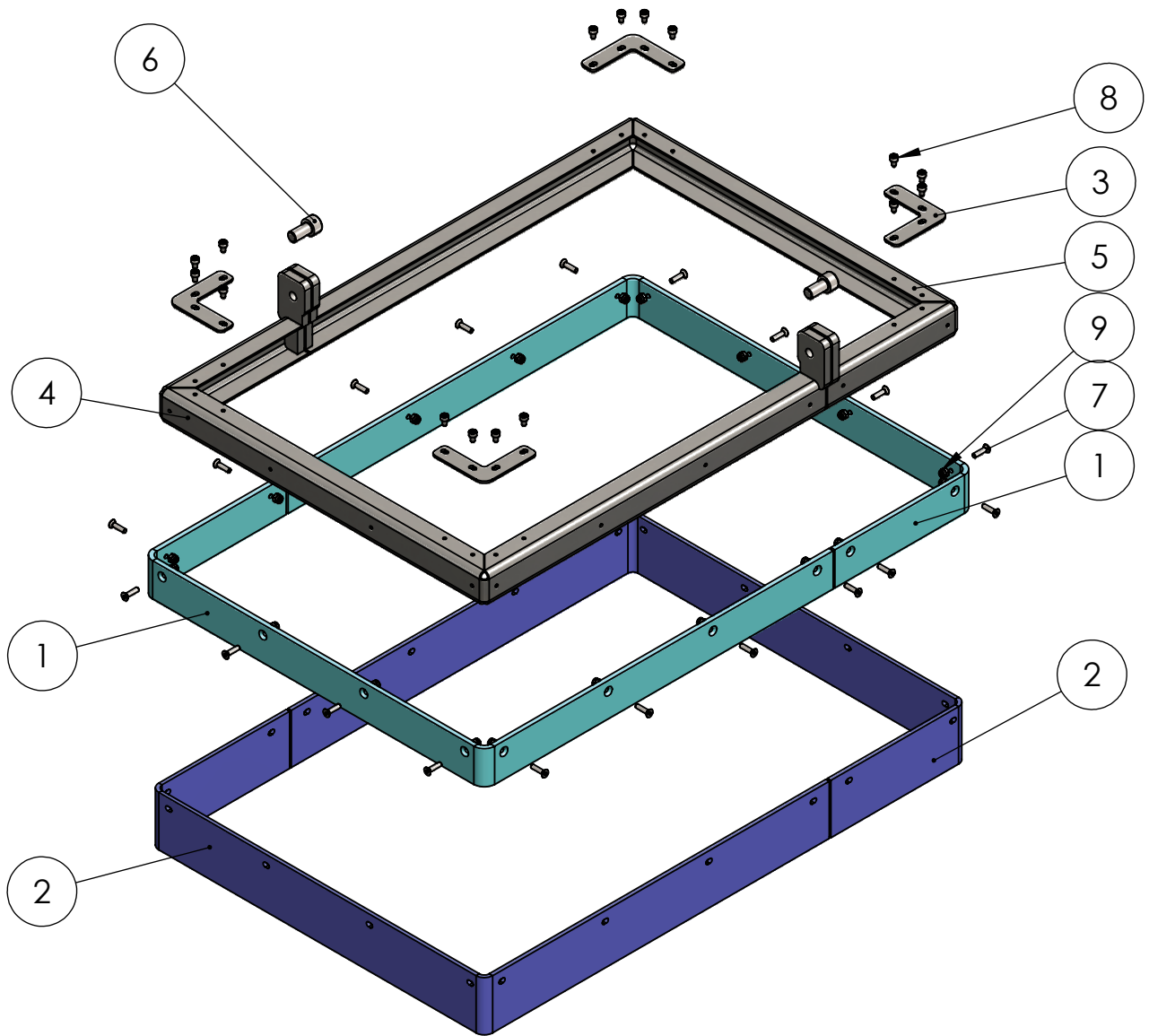
ITEM No.	PART Ref No.	DESCRIPTION	TOPFLOOR PART No.	MATERIAL	QTY
1	EMS80B25	Electric Motor	540003	ITA	1
2	con40	Ø40 Capacitor		ITA	1
3	con50	Ø50 Capacitor		ITA	1
4	clamp40	Ø40 Clamp	800030	A2	1
5	clamp50	Ø50 Clamp	800031	A2	1
6	Cover	Terminal Box Cover		ITA	1
7	Bracket	Capacitor Protector/Bracket	705023	RVS 304	1
8	M20 Swivel	M20 Cable Gland		ART	1
9	Hood	Motor Cooling Hood	705024	RVS 304	1



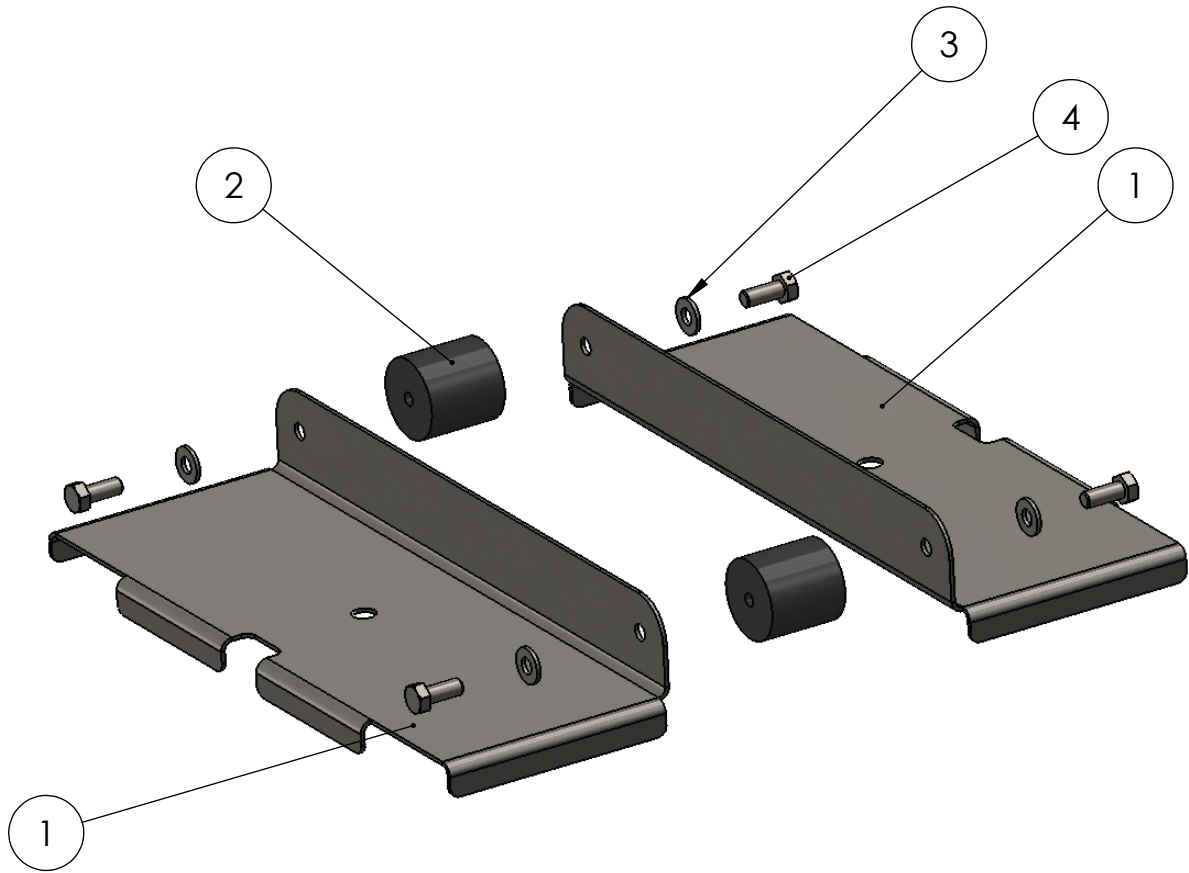
ITEM No.	PART Ref No.	DESCRIPTION	TOPFLOOR PART No.	MATERIAL	QTY
1	Lower Part	Lower Eccentric Part	707004	RVS 304	1
2	Upper Part	Upper Eccentric Mass Part	707005	RVS 304	1
4	207_2_03	72x35x17 Ball Bearing	801511	NTN	1
5	O-Ring 76x3	Ø76X3 NBR O-Ring	801510	NBR 70	1
6	30x6x6 Guide	30x6x6 Spiggot		A5	1
7	Seal	40x72x7 HMSA Seal	540002	SKF	1
8	Ring	Eccentric Fill Ring Washer	707006	RVS 304	1
9	Screw	M6x8 Set Screw	800029	A2	1
10	Washer	Ø72 K2 6207 Spacer Washer O-Ring	801513	STAAL	1



ITEM NO.	PART Ref No.	DESCRIPTION	TOPFLOOR PART No.	MATERIAL	QTY.
1	Wheel	Ø200x40 Wheel	610001	ART.	2
2	StarNut	M10 Star Nut - Holding Ground Plates	608003	ART.	2
3	M10 Clip	DIN9021-10,5x30x2,5 Ring Washer	705021	A2	2
4	Rubber Bung	Rubber Vibration Absorbers M8 D=40 L=40	650004	ART.	4
5	Handle	Carry/Transportation Handle	707010	ART.	1
6	Boom Bar	Boom Handle Bar with Control Box		ASS	1
7	Banana Bar	EX55-OCS Banana U-Frame Bar		ASS	1
8	Eccentric	EX55-OCS Eccentric		ASS	1
9	Dampers	Ø55x47 M10 Rubber Damper / Vibration Absorbers	650002	ART.	4
10	Base	Aluminium Base	705010	ALU	1
11	Strip 1	Long Bump Strip - Front & Back	607005	HMPE	2
12	Strip 2	Short Bump Strip - Sides	607004	HMPE	2
13	Corner	L Corner Profile		ASS.	2
14	Motor	Complete Electric Motor Set		ASS.	1
15	DIN 7991 - M10 x 16	M10x16 Imbus Screw	800034	A2	4
16	DIN 7991 - M6 x 16	M6x16 Imbus Screw	800033	A2	8
17	DIN 125A - Ø8.4	M8 Close Ring Washer	800023	A2	8
18	DIN933 - M8 x 12	M8X12 Bolt	800041	A2	8
19	DIN 125A - Ø10.5	M10 Close Ring Washer	800011	A2	14
20	DIN 1587 - M10	M10 Cap Nut	800016	A2	4
21	DIN 125A - Ø19	M18 Close Ring Washer	608001	NYLON	2
22	DIN 125A - Ø13	M12 Close Ring Washer	800019	A2	2
23	DIN 985 - M12	M12 Lock Nut	800018	A2	2
24	DIN 933 M10 x 30	10x30 Nut	800015	A2	4
25	DIN 931 - M10 x 70 x 26-N	M10x7x26-N Nut	800010	A2	1
26	DIN 985 - M10	M10 Lock Nut	800012	A2	5
27	DIN 7991 - M4 x 10	M4x10 Imbus Screw	800028	A2	14
28	ISO 7380 - M10x16	M10x16 Imbus Bolt	800088	A2	2
29	DIN 912 M8 x 20	M8x20 Imbus Bolt	800021	A2	2
30	DIN 985 - M8	M8 Lock Nut	800022	A2	2
31	0234-pol	Motor Housing Plate		ASS.	1
32	M12 Threaded End	M12 L=120 Threaded Bolt	707001	RVS 304	2



ITEM No.	PART Ref No.	DESCRIPTION	TOPFLOOR PART No.	MATERIAL	QTY
1	0110-pol	Bump Rail	607006	HMPE	2
2	0111-pol	Rubber Splash Guard	705044	RUBBER	2
3	0126-pol	Corner Splash Reinforcement	705028	RVS 304	4
4	0128-pol	M10 Splash Edge	705026 A	ASS	1
5	0129-pol	M11 Splash Edge	705026 B	ASS	1
6	DIN 912 - M10x20	M10x20 Imbus Bolt	800070	A2	2
7	DIN 7991 - M4x16	M4x16 Imbus Screw	800061	A2	20
8	DIN 912 - M4x6	M4x6 Imbus Bolt	800059	A2	16
9	DIN 7040 - M4	M4 Lock Nut	800068	A2	20



ITEM No.	PART Ref No.	DESCRIPTION	TOPFLOOR PART No.	MATERIAL	QTY
1	0171-pol	Connector Plate		RVS 304	2
2	Rubbers	M8 D=40 L=40 Rubber Vibration Damper Buffers		ART	2
3	DIN 127B - M8	M8 Spring Washer		A2	4
4	DIN933 M8x16	M8x16 Bolt			4

TOPFLOOR

SIMPLE, STRONG, SAFE

We supply a full range of cleaning equipment for rental or purchase.

For more information, or a cleaning solution to suit your business, please get in touch –

For a more comprehensive product range, please visit our website.

Distributed by:



Address

Crescent Industrial Ltd
Berrington House,
Berrington Road,
Leamington Spa
CV31 1NB

Contact

t: 0845 33 77 695
f: 0845 33 78 695
e: info@c-ind.co.uk

www.crescentindustrial.co.uk